



Index

Accessories	Page
Introduction to Microwave Launches	75
Hermetic Transitions to Microstrip	76
Launch Pin Transitions to Microstrip	77
Launch Pin/Tab Transitions to Stripline	78
Launch Pin/Tab Direct Transitions to Stripline	79

Unless otherwise specified, all dimensions are in inches.

Introduction to Microwave Launches

Concept

Detail dimensions and application references for all accessories are illustrated in this section. Also illustrated are installation, dimensions and instructions for each accessory.

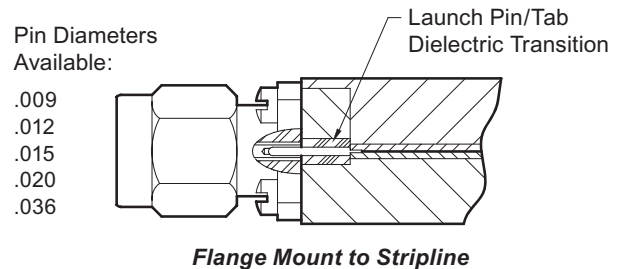
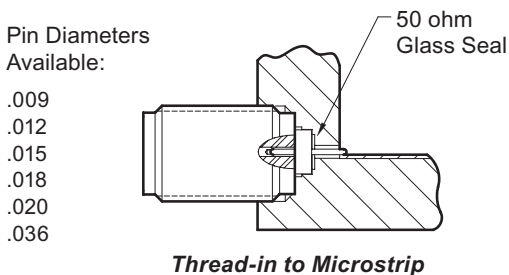
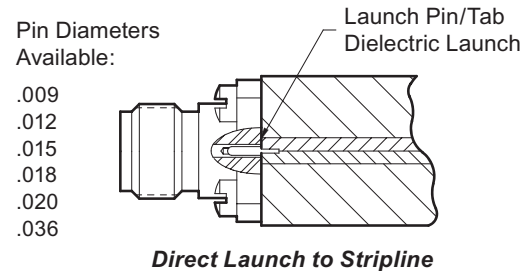
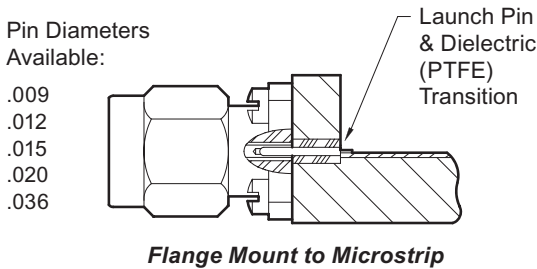
Selection Process

Design should proceed in the following order:

1. Select substrate material
2. Determine line width
3. Select the optimum launch accessory that will provide the best electrical performance.
4. Select the required connector that will mate with the chosen accessory and provide the best mechanical package configuration.

The connector accessories are made available so that the user may select an optimum microwave frequency launch to their circuitry.

Southwest Microwave connectors and accessories are designed to be compatible with each other to assure electrical performance. Southwest Microwave **cannot** assure electrical performance when the accessories are used with a non-Southwest Microwave connector.



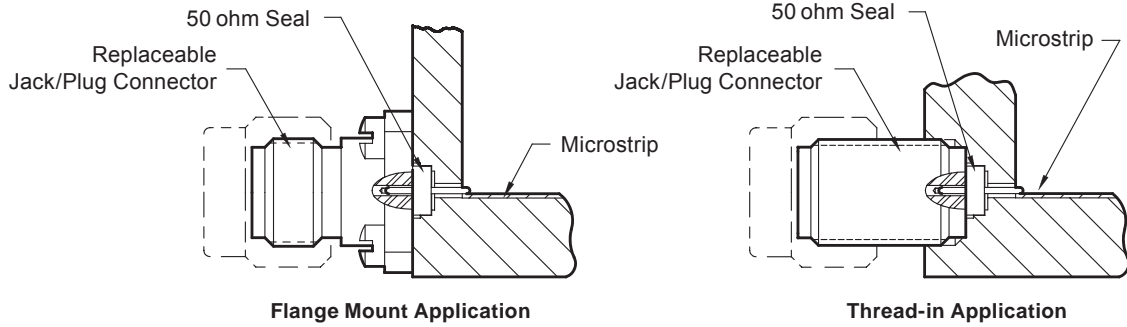


Accessories and Application Reference

Hermetic Transitions to Microstrip Circuits

For Flange Mount and Thread-in Connectors

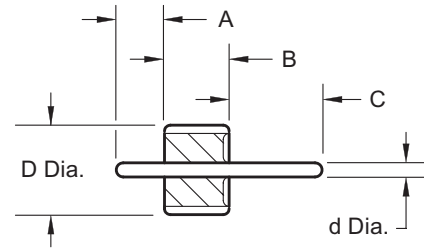
Hermetic MIC Packages



Materials / Construction:

- 50Ω Impedance Nominal
- Metal: Kovar
- Plating: Gold over Nickel Per MIL-G-45204
- Glass: 7070

50 ohm Hermetic Seals



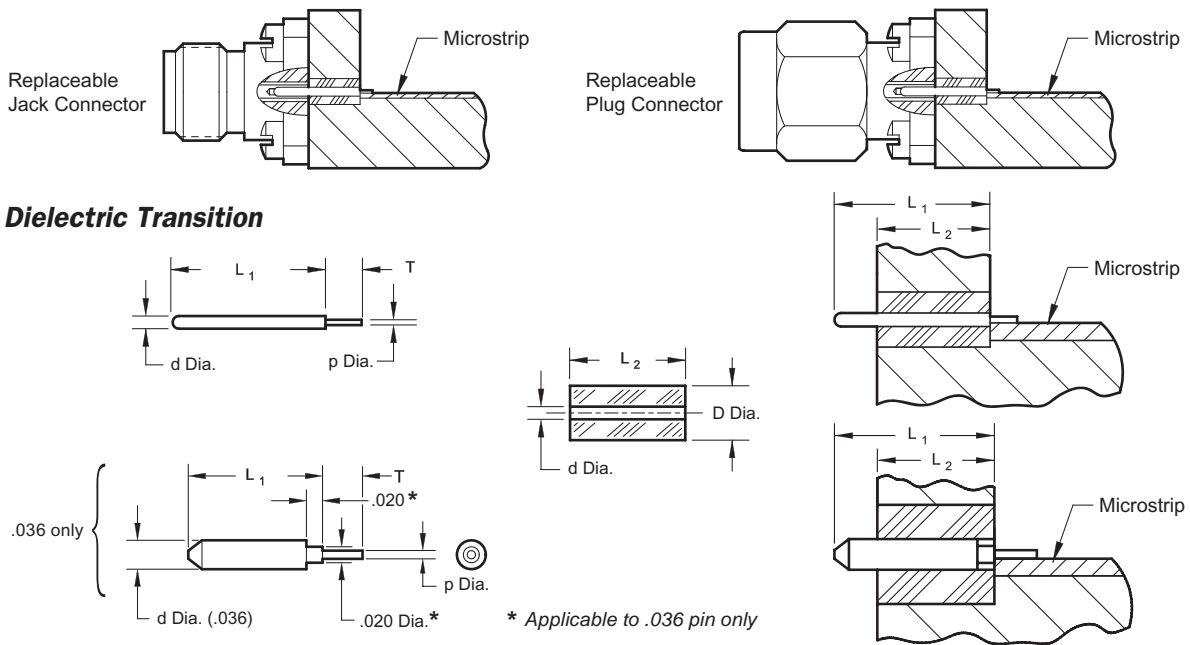
.036	.268	.098	.060	.185	490-00G
.020	.158	.050	.060	.125	290-02G
.018	.110	.072	.060	.180	290-01G
.015	.098	.050	.0625	.125	290-00G
.012	.076	.040	.055	.029	290-07G
	.076	.040	.055	.080	290-06G
.009	.068	.030	.055	.026	1490-13G
	.068	.030	.055	.080	1490-14G
	.068	.030	.055	.120	1490-15G
d Dia.	D Dia.	A	B	C	Seal No.

Refer to Installation and Tools Section for Drill Information and Tools.

Launch Pin Transitions to Microstrip Circuits

For Flange Mount Connectors

Launch Pin and Dielectric Transition to Microstrip



Materials / Construction:

- Launch Pin: BeCu Per ASTM B196
- Plating: Gold Over Nickel Per MIL-G-45204
- Dielectric: Virgin PTFE Fluorocarbon Per ASTM D1710

.036	.117	.050	.010	.175	.125	290-37G	290-37P	290-37D
				.237	.187	290-36G	290-36P	290-36D
.020	.064	.030	.007	.160	.125	290-14G	290-14P	290-14D
				.225	.187	290-13G	290-13P	290-13D
.015	.048	.015	.005	.160	.125	290-12G	290-12P	290-12D
				.225	.187	290-11G	290-11P	290-11D
.012	.039	.015	.005	.160	.125	1090-12G	1090-12P	1090-12D
				.225	.187	1090-11G	1090-11P	1090-11D
.009	.029	.015	.005	.160	.125	1490-12G	1490-12P	1490-12D
				.225	.187	1490-11G	1490-11P	1490-11D
d Dia.	D Dia.	T	p Dia.	L1	L2	Pin & Dielectric	Pin Only	Dielectric Only
Refer to Installation and Tools Section for Drill Information and Tools.						Accessory No.		

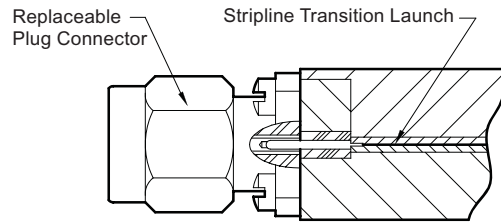
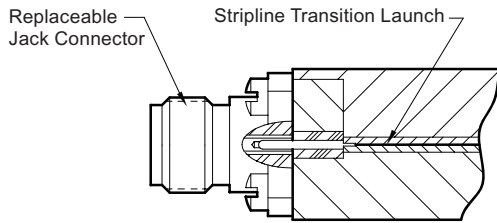


Accessories and Application Reference

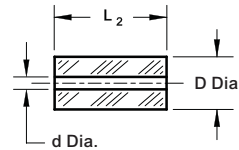
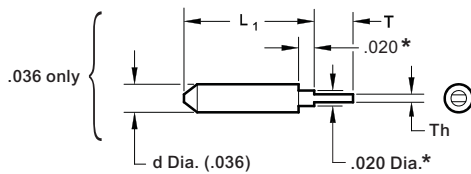
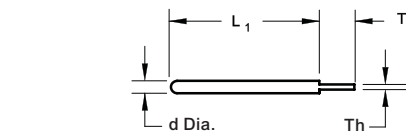
Launch Pin/Tab Transitions To Stripline Circuits

For Flange Mount Connectors

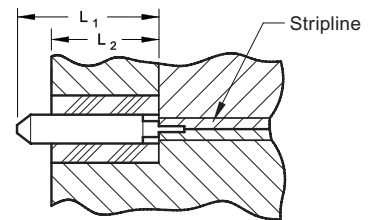
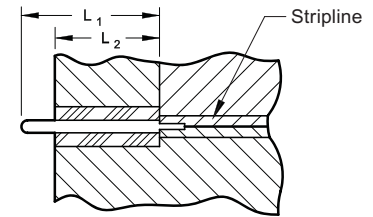
Launch Pin/Tab and Dielectric Transition to Stripline



Dielectric Transition



* Applicable to .036 pin only



Materials / Construction:

- Launch Pin: BeCu Per ASTM B196
- Plating: Gold Over Nickel Per MIL-G-45204
- Dielectric: Virgin PTFE Fluorocarbon Per ASTM D1710

.036	.117	.050	.004	.175	.125	290-35G	290-35P	290-35D
				.237	.187	290-34G	290-34P	290-34D
.020	.064	.050	.004	.160	.125	290-27G	290-27P	290-27D
				.225	.187	290-26G	290-26P	290-26D
.015	.048	.040	.004	.160	.125	290-25G	290-25P	290-25D
				.225	.187	290-24G	290-24P	290-24D
.012	.039	.025	.004	.160	.125	1090-06G	1090-06P	1090-06D
				.225	.187	1090-07G	1090-07P	1090-07D
.009	.029	.015	.003	.160	.125	1490-03G	1490-03P	1490-03D
				.225	.187	1490-02G	1490-02P	1490-02D
d Dia.	D Dia.	T	Th	L1	L2	Pin/Tab & Dielectric	Pin/Tab Only	Dielectric Only

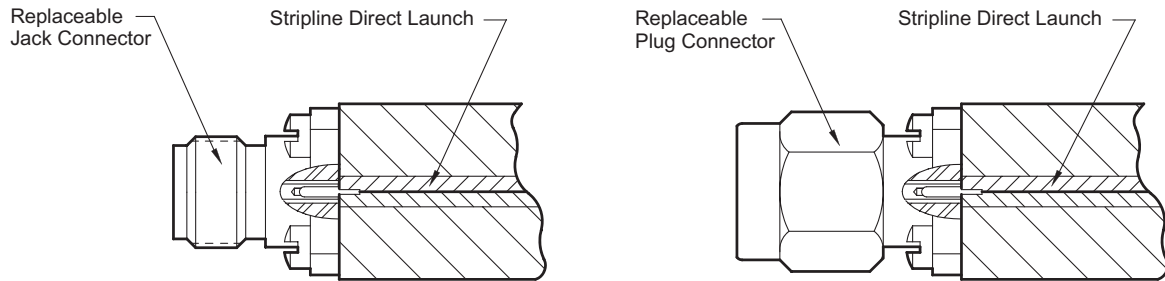
Refer to Installation and Tools Section for Drill Information and Tools.

Accessory No.

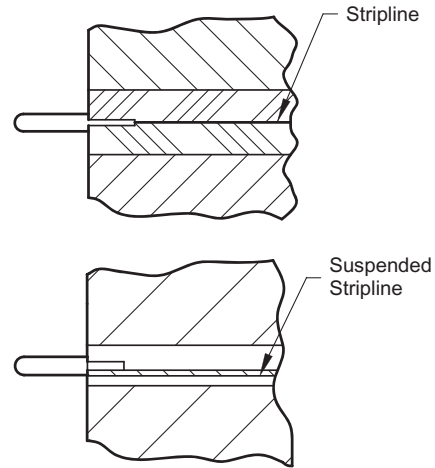
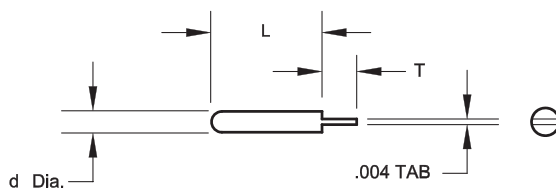
Launch Pin/Tab Direct Transitions To Stripline Circuits

For Flange Mount Connectors

Launch Pin/Tab Transition to Stripline



Direct Launch



Materials / Construction:

- Launch Pin: BeCu Per ASTM B196
- Plating: Gold Over Nickel Per MIL-G-45204

.020	.080	.050	290-10G
.018	.080	.040	290-79G
.015	.085	.040	290-09G
.012	.050	.025	1090-05G
.009	.050	.015	1490-01G
d Dia	L	T	Accessory No.